

JJRC X17 GPS 5G WiFi FPV with 6K ESC HD Camera 2-Axis Gimbal Optical Flow Positioning Brushless Foldable RC Drone Quadcopter RTF - Orange One Battery

Description:

Brand Name: JJRC

Item NO.: X17

Color: Orange, Green (Optional)

Material: High Toughness and Explosion-Proof ABS, Electronic Components

Motor: Brushless Motor

Quadcopter Battery: 11.1V 2850mAh Lipo (Included)

Battery Weight: 170g

Flying Time: About 30mins

Charging Time: About 240mins

Remote Control Mode: Handle/Mobile Phone Control

Remote Control Battery: 3 x AA Battery (NOT Included)

Remote Control Distance: 800-1000m

Mobile Phone Holder Size: Max Support 8.5cm

Flying Speed: 7m/s

FPV: 5G WiFi

FPV Range: 800m

Camera: 6K ESC HD

Picture Resolution: 5700*4275

Video Resolution: 2688*1512

Local Video Frame Rate: 25FPS

Gimbal: 2-Axis Self-stabilization Gimbal

Positioning System: GPS + Optical Flow Positioning

Quadcopter Expand Size: 43x43x6.7cm

Quadcopter Folded Size: 17x11.5x6.7cm

Flying Weight: 500g

Propeller Size: 9.5cm

Package Size: 34x22.5x10.5cm

Package Weight: 1250g

Features:

- With Foldable and portable design, the drone is easy to carry.
- With 5G wifi function can be connected APP, APK system to take pictures, video, real-time transmission through the phone camera image.
- 6K HD ESC camera, support remote control of 90°, 120°super wide angle shooting range.
- Dual Camera Switching. Switch to the lens that at the bottom of the drone through the remote control and switch the perspective of the aerial shot with one button to bring more perspective experience.
- Multi-function remote control with display can synchronize the status of quadcopter in real time. More data more professional experience.
- HD digital image transmission system strong anti-interference and 800 meters distance transmission.
- GPS satellite positioning can be accurately return to the starting points make it easier to control and avoid losing contact.
- Flow Positioning. Optical flow positioning fixed point height and it can shoot more easily and steadily indoor.
- Altitude Hold Mode. The quadcopter can hover in the air stably making the shooting easier.
- Point of Interest. Select a center point, set the flight height and radius and the drone will automatically fly 360°around the interest point.
- Human Figure Following. Lock the human figure the drone will automatically lock the target.
- Headless Mode. With the direction of remote control as the center to control the flight which will no longer easily lost.
- Gesture Control. The shooting/video/flight direction of the drone can be controlled by gestures which simplifies the complexity and it easy to control.
- TIK TOK Video Editing. You can use one key to beautify your face and add background music on the APP.
- Powerful brushless motor brings extraordinary performance the highest speed can reach 30KM per hour.
- 11.1V 2850 mAh intelligent lithium battery, 30 minutes of ultra-long battery life.
- 6-axis gyroscope, with gyroscope calibration function, stuck protection, low power protection.
- The quadcopter fuselage is made of high strength and resistant engineering plastics lightweight and durable resistance.

Functions: GPS Positioning, Brushless Power, Low Battery/Over Distance/ Out of Control Return Home, Key Return Home, Optical Flow Positioning, 360° Orbiting Flight, Intelligent Follow, Anti-shake Stabilization, Long-distance Flight, Automatic Follow-up, Custom Route, Beautiful Yan Shooting, MV Production, Mobile Phone Control, One-key Take Off and Landing.

Package Included:

- 1 x X17 Drone
- 1 x Remote Control
- 1 x 11.1V 2850 mAh LiPo Battery
- 1 x USB Charging Cable
- 4 x Spare Blade
- 2 x Screwdriver
- 1 x User Manual
- 1 x Storage Bag





6K HD Professional Drone

2-AXIS Gimbal · GPS Intelligent Positioning

It adopts advanced optical flow positioning technology and integrates GPS global positioning, Intelligent environment awareness with a large aperture lens added below, Accurate recognition, full-directional perception and intelligent obstacle avoidance make the flight smooth and safe.

Fold, experience preconceived

FOLO

The fuselage features an innovative crossover and easy folding design, It feels just right, even after thousands of folds, and still maintains flight stability.





Folding

size: 17x11.5x6.7cm



Open

size: 26x26x6.7cm



6K ELECTRIC MODULATION CAMERA

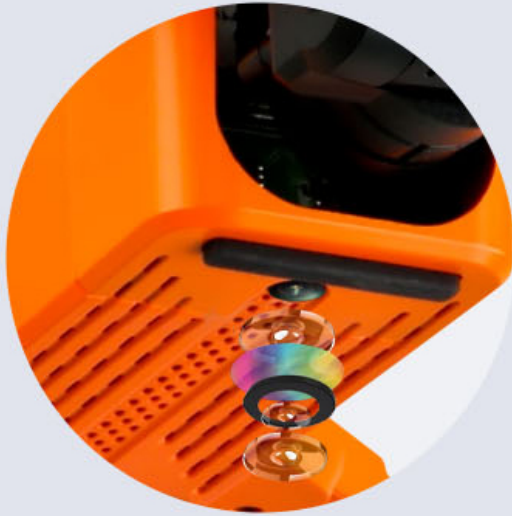
6K pixels means you see six times as much detail as a 1080P hd camera, Presents excellent highlights and

shadow details



90° 2-AXIS Gimbal
Support Long Distance control

6K Image quality
Cinematic excellence



BOTTOM CAMERA

Get rid of the fixed Angle of view, the world beauty panoramic view, Capture a shocking film.



2-AXIS GIMBAL

Effectively eliminate camera shake, no matter how the drone tilts and shakes, the camera is always parallel to the horizontal.

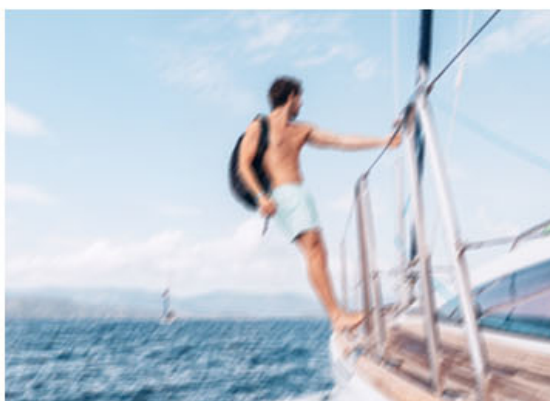


TWO - AXIS MECHANICAL GIMBAL

Intelligent balance shooting, clear picture



2-Axis Stable Gimbal shooting



NO Gimbal Shooting



BRUSHLESS POWER LEVEL 6 WIND RESISTANCE

The whole machine adopts 4 advanced brushless power motors with strong power and energy saving, Good wind resistance, better than the previous carbon brush motor.





level 6 wind
resistance

Strong Power



5G wifi



Two-axis electric gimbal



6K Photo



Dual camera switch



Electric control camera



Brushless motor



GPS positioning



Optical flow localization



Phone control



HD FPV



Headless mode



Waypoint function



Intelligent follow



Surrounding



23 minutes service time



Low-voltage return



Over range return



One key return



One key landing



Speed control



GPS RETURN REFUSED TO LOSE

Drone is equipped with a variety of intelligent turn-back. It records the starting point position before taking off. When self-return is needed, automatic turn-back can be realized through the remote control.



Low-Voltage
return



Over-range
return



Losing signal
return



One key
return

5G WiFi FPV



Far enough to record the world

800meters Flight





REMOTE CONTROL FOR DRAWER TYPE BRACKET

The remote control is ergonomically designed to hold the phone through a drawer, Comfortable to hold, easy to handle and carry.



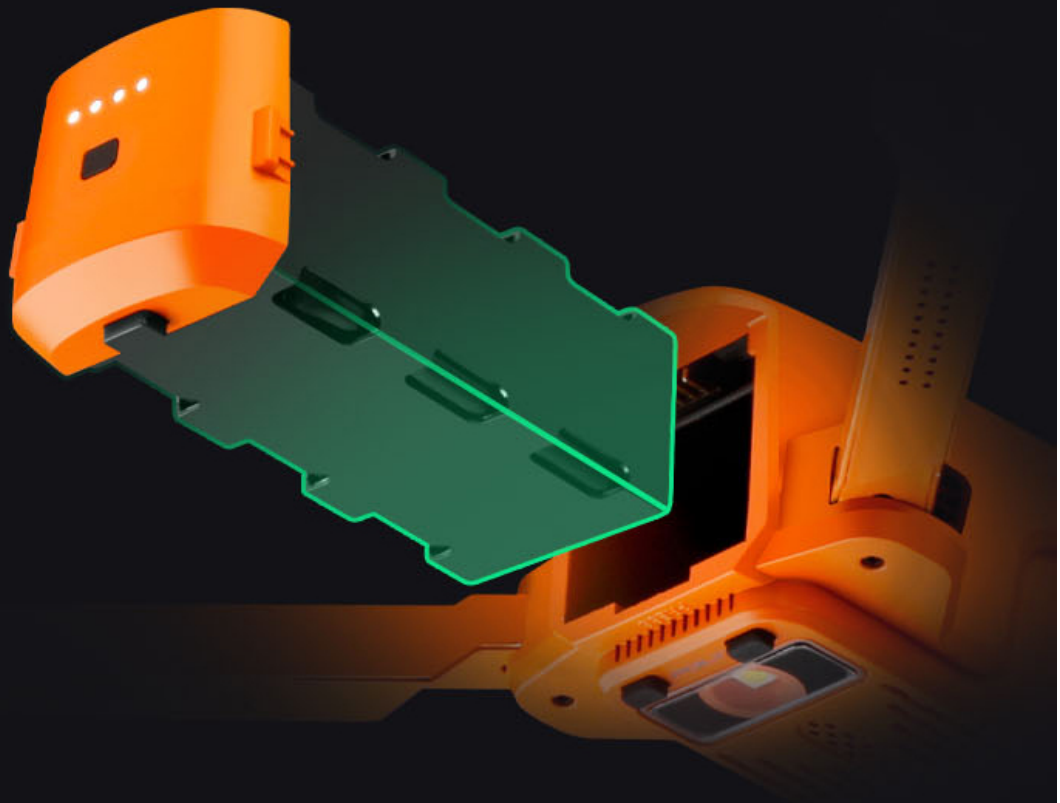
- Convenience
- Controllability
- Sensitivity





MODULE BATTERY POWER DISPLAY

Drawer type modular battery design, easy to install and take, the battery with real-time battery display lamp, you can check the power at any time.



30mins
service time

2850mAh
battery capacity

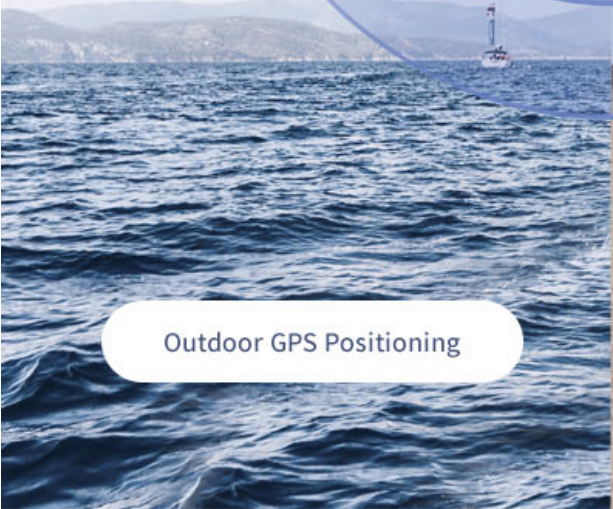
11.1V
li-po voltage



GPS/OPTICAL FLOW LOCALIZATION IT CAN HOVER INSIDE AND OUTSIDE

With the support of dual positioning system, the drone can intelligently keep stable hovering no matter indoors or outdoors.

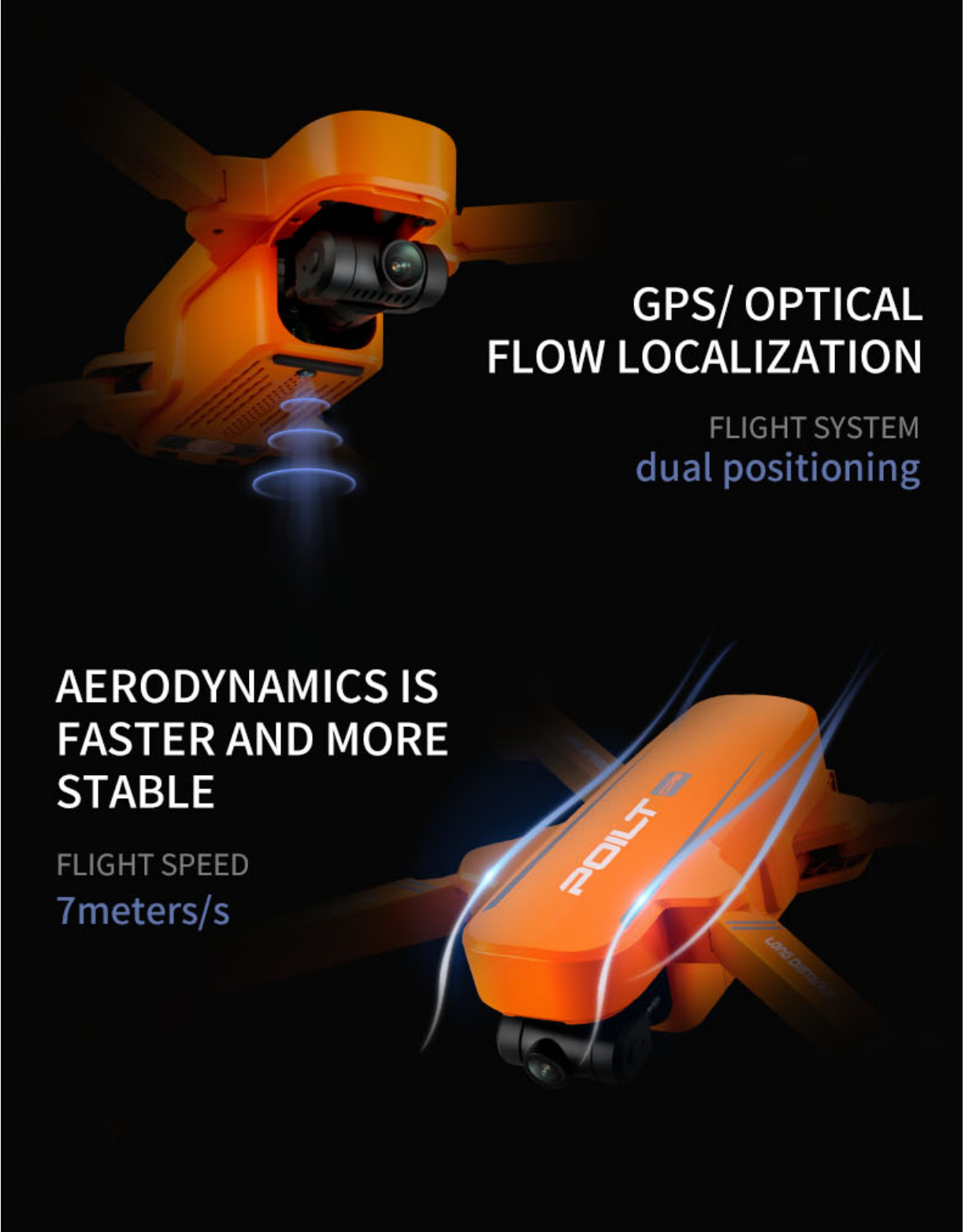




Outdoor GPS Positioning



Indoor Optical flow localization



GPS/ OPTICAL FLOW LOCALIZATION

FLIGHT SYSTEM
dual positioning

AERODYNAMICS IS FASTER AND MORE STABLE

FLIGHT SPEED
7meters/s

BOILT

Light sensor

6K HD RECORDING

Wonderful blockbusters are released in minutes





GESTURE TO TAKE PICTURES / VIDEO

Only a gesture can realize the camera or video recording, automatic intelligent recognition, easy to complete the interval photo.





INTELLIGENT FOLLOW

Control aircraft flying at a distance of 5 meters from the pilot, turn on the following function, It can automatically follow the movement of the operator and take pictures.



RUNNING RECORDING

Record and enjoy it

OUTDOOR RECORDING

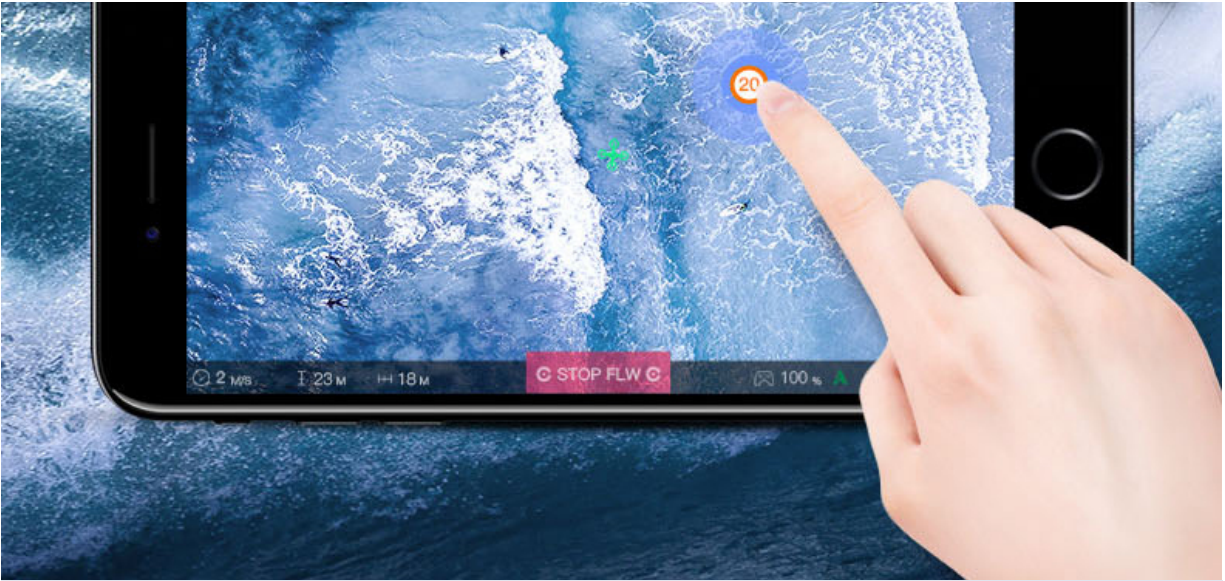
Record the scenery along the way and preserve the beautiful moments



EXPERIENCE WAYPOINT FLIGHT WITHOUT REMOTE CONTROL

App map accurately specify the navigation point, without cumbersome control, you can point where you want to fly.





360 DEGREES FLY AROUND YOU GET A BIG SHOT

Locate the center point and set the circle radius through APP.
The drone will immediately circle the center point for flight.





360-DEGREE SURROUND SHOOTING

Perfect shooting
Surround recording video
Make chic movies with ease



Description:

6K-GPS Brushless with 2-Axis Gimbal drone

Folding Size:

17x11.5x6.7cm

Unfold Size:

26x26x6.7cm

Color:

Orange/Green

Camera Parameter:

6K Pixels (Double Camera)

Service Time:

30 minutes

Camera Gimbal:

**2-Axis mechanical stable
Gimbal**

Remote/FPV :

5G wifi

Control Distance:

about 800meters



Lens adjust down

Lens adjust up

GPS Switch

Geomagnetic calibration

Throttle Joystick

Direction Joystick

Headless /Return

One key take off/Land

Start

Photo/Video

Power switch

Portable Carry Box

Waterproof Easy to carry out

