

FIMI A3 5.8G 1KM FPV With 2-axis Gimbal 1080P Camera GPS RC Drone Quadcopter RTF - 5.8G FPV

Description:

Item	Specification
FIMI A3 RC Quadcopter	<p>Model: A3 Color: White Dimension: 285*229*69mm Diagonal Size: 323mm Weight: 560g Hover Accuracy: when GPS Positioning is active, Vertical: ± 0.5 m & Horizontal: ± 1.5 m Max ascending speed: 6 m/s Max descending speed: 5 m/s Max cruising speed: 18 m/s Max R/C distance: about 1km Flying Limited Altitude: 500 m Flight time: 21mins Wind resistance: ≤ 4 Satellite positioning systems: GPS+GLONASS Operating frequency: 2.4-2.483GHz; 5.725-5.850 GHz (40CH) Battery: 11.1V 2000 mAh 3S Lipo Battery Package Weight: 1.68kg Package Size: 344x292.5x107mm</p>
Remote Controller	<p>Screen resolution: 480*272 Screen size: 4.3inch Frequency: 2.4-2.483GHz; 5.725-5.850 GHz (40CH) Max R/C distance: About 1000m Built-in Battery: 2950 mAh lipo battery with about 2.5h working time Voltage: 3.7V Charge port type: Micro USB DVR: 720*480 video resolution</p>

Gimbal	Controlled Rotation Scope: 0° ~ -90° Pitch angle Stabilization: 2-axis mechanical and 3-axis electronic gimbal
HD 1080P Camera	Lens: FOV 80° Aperture: f2.0 Focal Distance: 3.54 mm Equivalent Focal Distance: 27mm Sensor: 1/3.2" CMOS ISO Range: 100 - 3200 for video; 100 - 1600 for picture Shutter Speed: 4 ~ 1/8000 s Max Bitrate: 60Mbps Max Photo Resolution: 8M 3264*2448 Video Resolution: 1920x1080 30 fps / 1920x1080 25 fps File System: FAT32 / exFAT Image Format: JPG Video Format: MP4 DVR: 1920x1080 30 fps / 1920x1080 25 fps
Adapter	Rated Output: 14V 0.8A Rated Input: 100-240V ~ 50/60Hz 0.3A Rated Output Power : 11.2W
Balance Charger	Rated Output: 11.1V 0.8A Rated Input: 14V 0.8A Applicable Battery: 3S Charging Limit Voltage: 12.75 V Rated Voltage: 11.1 V Rated Capacity: 2000 mAh / 22.2 Wh Weight: about 162g
Propeller	Item Name: Quick-release propeller Length: 7.5inch Pitch: 3.6inch

Feature:

1. **HD 1080P camera** powered by Ambarella ISP processor and Sony CMOS sensor, provides perfect HD picture and video.
2. The **2-axs mechanical and 3-axis electronic gimbal** provides stable and smooth footage in any situation.
3. With lightweight design, the drone flies faster.
4. With **quick-release propellers**, fast and powerful propulsion with durable, well balanced design.
5. **Flight time** is up to **25mins** with 11.1V 2000 mAh lipo battery.
6. **1km range 5.8G real time transmission system.**
7. With **DIY port**, you can explore your way to play with the drone, like driving a servo, lighting a led.
8. Remote Controller is built-in **LCD screen, DVR, and User Interface.**
9. Headless Mode, no need to adjust the position of aircraft before flying .
10. One key to return function makes it easy to find the way home.

Functions: Up/down, Forward/backward, Turn left/right, Sideward flight, **One key taking on/off, GPS mode, Headless mode, One key return, Follow me, Orbit, Fixed-wing mode, Drone, DIY supported, Low battery protection, Automatic return losing signal, mode 1/ mode 2 switchable**

Package Included:

- 1 x RC Quadcopter(with camera)
- 1 x Transmitter
- 1 x Gimbal
- 1 x 11.1V 2000 mAh Lipo Battery
- 1 x USB Cable
- 6 x Propeller
- 1 x Charging Cable
- 1 x Balance Charger
- 1 x Manual(**Download**)





FIMI A3 5.8G Aerial Photography RC Quadcopter



Powerful Features

5.8GHz&2.4GHz/ 1080P HD camera / GPS / Headless mode / One key
return / Altitude hold mode / 25mins flight time / FPV 1km / DIY supported /
Remote controller built-in LCD screen /Quick release propellers



Fly faster and longer
with lightweight design

MAX Flight time: 25mins

MAX Speed: 65km/h

Mixed 2-axix gimbal

The 2-axix mechanical and 3-axix
electronical gimbal provides stable
and smooth footage in any situation.



Quick-release propellers

Quick mounting and releasing.
Fast and powerful propulsion
with durable, well balanced design.



11.1V 2000mAh 22.2Wh

-4.35v/cell HV battery provides strong power to realize excellent aerial photography and FPV

-With standard RC charging port to support high power balance charger



Enjoy immersive FPV
experience with powerful
FPV system



Dual DVR mode



Up to 1km
video transmission



1080P HD camera



Remote controller
built-in LCD screen



FIMI 1080p HD Camera

- f2.0 Aperture
- 8.08M Effective Pixels
- 3.54 mm Focal Distance
- 1920x1080 30 fps /1920x1080 25 fps video resolution
- 1/3.2" CMOS Sensor

HD Aerial Photography

The camera is powered by Ambarella ISP processor and Sony CMOS sensor, which provides perfect HD picture and video.



EIS



1080P HD shooting



Wide-angle and
low distortion



Pitch: -90°-0°

5.8GHz Video Transmission System

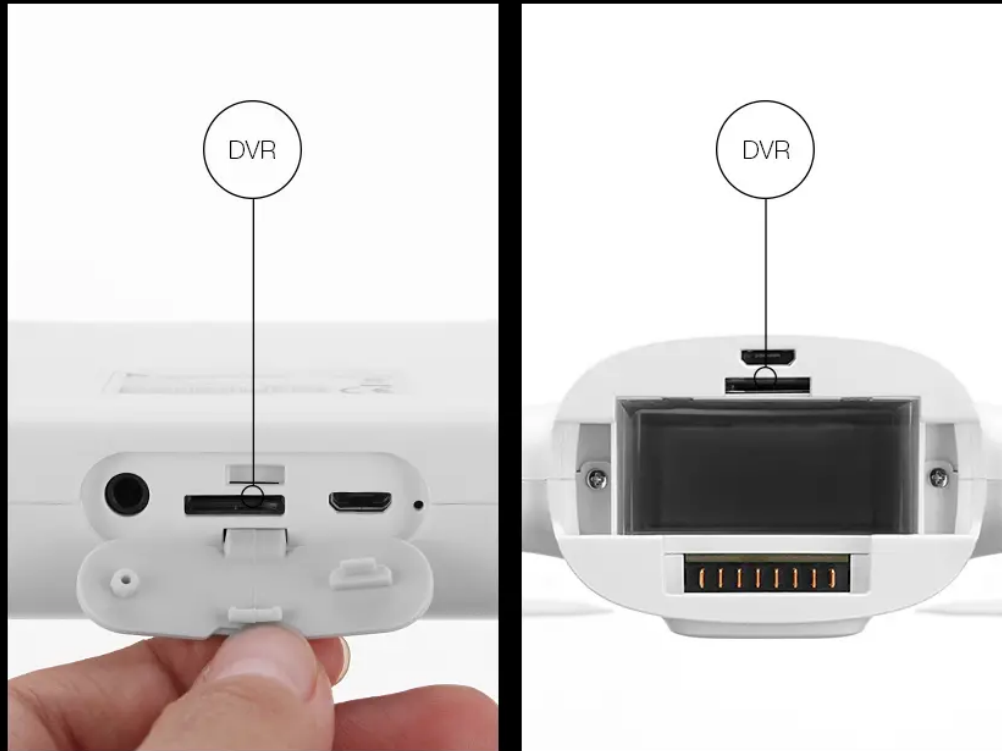
1km live video(FCC mode)



Dual DVR mode

Drone DVR video resolution: 1920x1080 30/25fps

Remote controller video resolution: 720*480





Multi-function FPV remote controller

-Built-in AVout, by which we can share the image and video with our friends in monitor or goggles.

Simple design rich User Interface

- Sport/GPS switch,
- one key return,
- mode1/2 switch
- Adjust shooting parameters of camera
- Adjust frequency of V-RX
- Replay the video
- Provide rich UI information to monitor flight of aircraft in real time



More functions, more powerful flight.



One key
taking on/off



Headless mode



One key return



Follow me



Fixed-wing mode



Orbit



Dronie



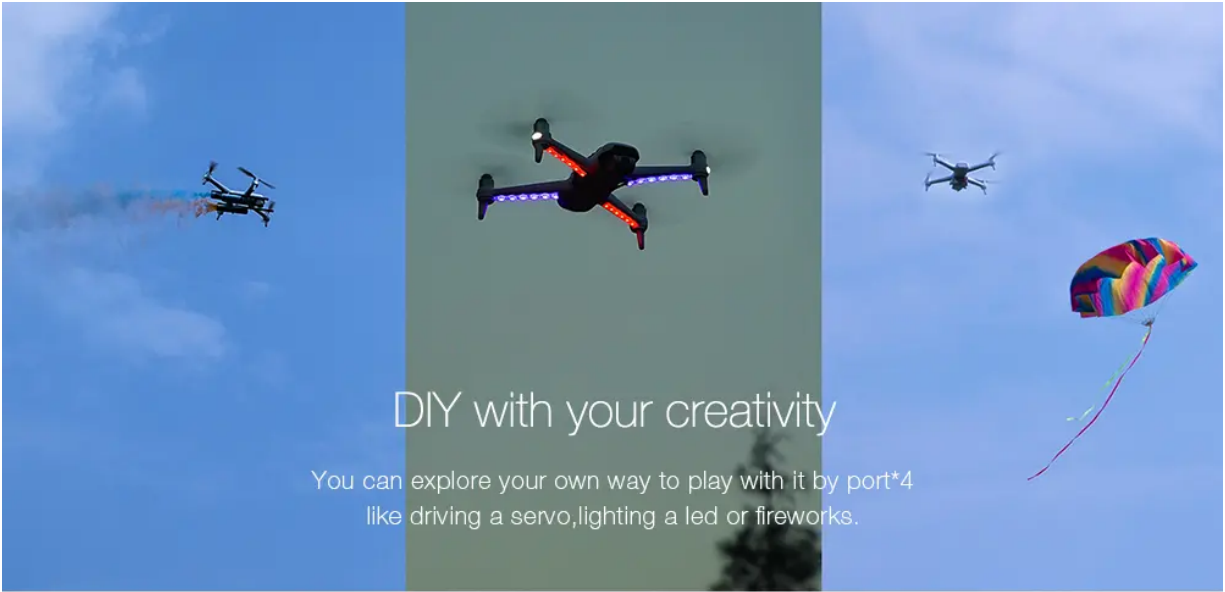
Automatic return
(losing signal)



Low battery
protection



GPS electronic
fence



DIY with your creativity

You can explore your own way to play with it by port*4 like driving a servo, lighting a led or fireworks.



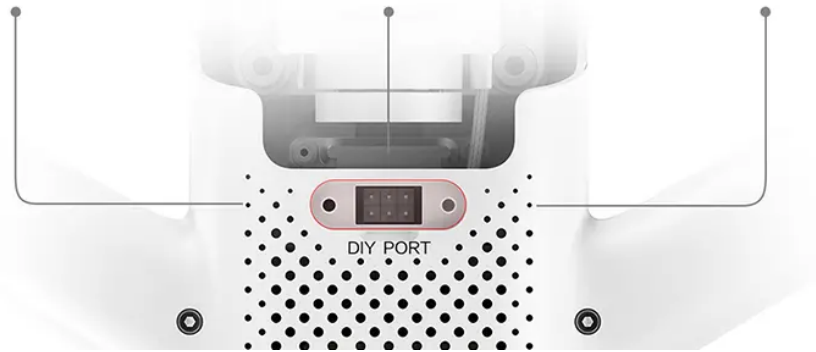
Fireworks lighter



LED



Servo





Dronie Mode



In dronie mode, the drone will fly backward at a certain speed along camera angle for a new shooting experience.



Sport mode Fixed-wing mode



Sport mode/Fixed-wing mode:
Enjoying FPV high-speed experience in sport mode/experiencing Fixed-wing flight when the drone keeps flying forward in Fixed-wing mode.

